

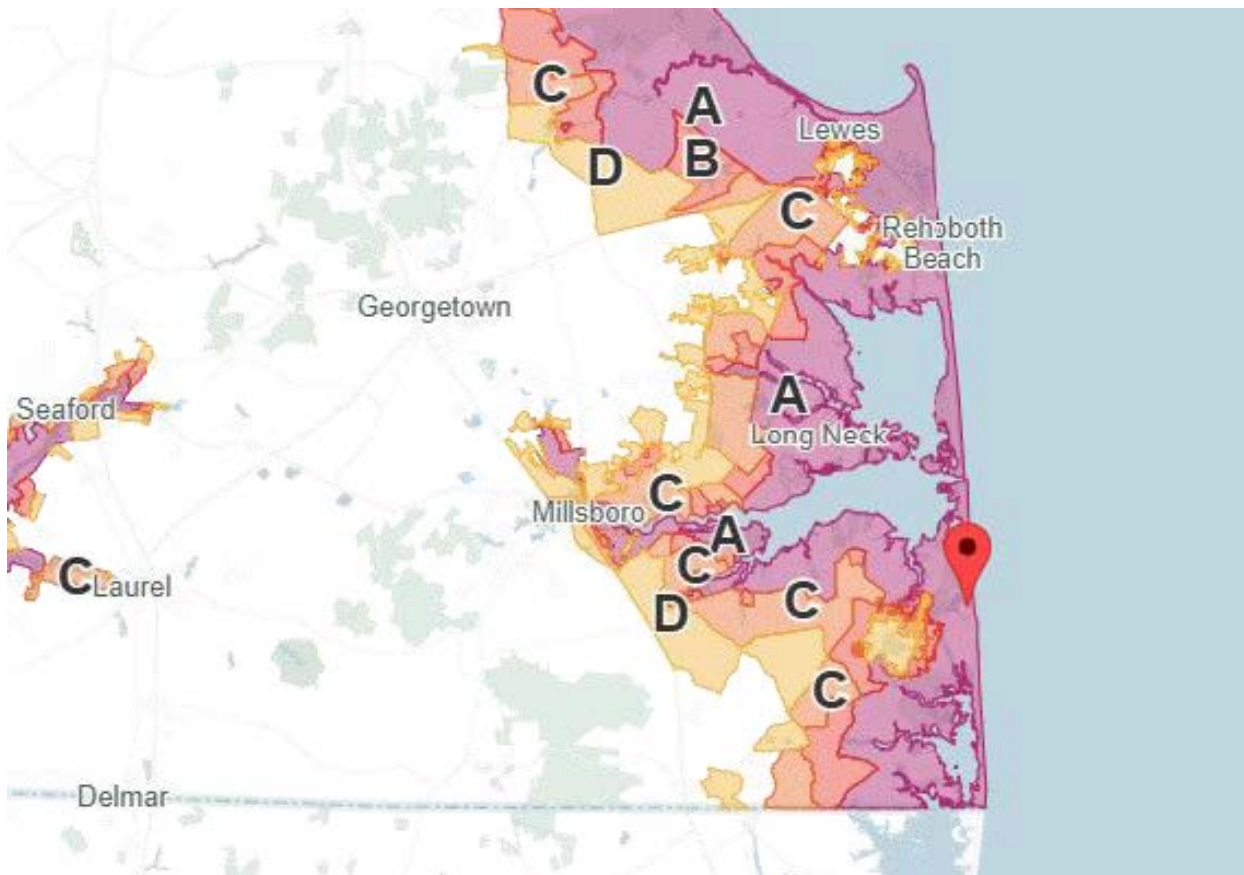
Town of Bethany Beach.....are you prepared?

STORM PREPAREDNESS



With hurricane season already underway, the Town of Bethany Beach wants to make sure our residents and visitors are familiar with how the Town keeps you informed during a potential storm event.

The Town of Bethany Beach is in Evacuation Zone A, which means it is very susceptible to flooding and damaging storm surge.



Town Resources

Town officials are constantly monitoring the weather. Should a potential storm threat arise, the Town has multiple ways of providing information in the days leading up to an event.

Code Red



Website: <https://accountportal.onsolve.net/bethanybeachtownde>

Code Red is a messaging platform that allows users to receive live updates and information. Examples are "The Town of Bethany Beach is under a Severe Coastal Flood Watch." or "The Town of Bethany Beach is under mandatory evacuation. Please gather your necessary items and leave the area immediately using an approved evacuation route."

Simply go to the website and register your phone number and email address to receive emergency alerts and updates from Town officials.

List Serv

The Town maintains a list of email addresses for all property owners known as the List Serve. Should a potential storm event be identified, necessary information can be shared via email. Call Town Hall 302-539-8011 and ask for Julie Malewski to get signed up!

Social Media



Search: Town of Bethany Beach

The Town has social media handles with Facebook and Instagram. Emergency alerts and updates will be shared across these platforms.

County Resources

Sussex County provides valuable information on its website located at:

<https://sussexcountyde.gov/emergency-preparedness>

Information on hurricane preparedness, shelters, evacuation plans, and news releases can be found on their website.



Smart 911



[Smart911](https://smart911.com) is a registry that permits citizens to provide additional information, so emergency responders are better prepared to assist during a crisis. Go online and register now!

State Resources

Website: PrepareDE.org

The Delaware Emergency Management Agency (DEMA) provides great information on being prepared for a potential storm event.

Make a Plan

Planning is vital. Planning allows you to act safely and with purpose in times of stress or strain, helping reduce the impacts of disaster. Create a plan for what you'll do before, during and after an emergency.

Build a Kit

Build an emergency supply kit with accessible and affordable items in the event of disaster, lost power, unsafe travel conditions or extended shelter-in-place orders. You need supplies ready to safely stay in place until the emergency passes.

Different types of kits:

- **Emergency shelter-in-place kit:** for an extended stay at home (three or more days).
- **Go-bag:** for immediate rapid evacuation of the home — a scaled-down version of the emergency shelter-in-place kit.
- **Travel kit:** for your vehicle or if you are traveling for work or vacation.

Stay Informed

Stay informed about emerging dangers, hazards and risks in your area. Stay connected with information coming from your local government, utilities and local media and receive emergency alerts directly on your phone.



Delaware Emergency Notification
System (DENS)

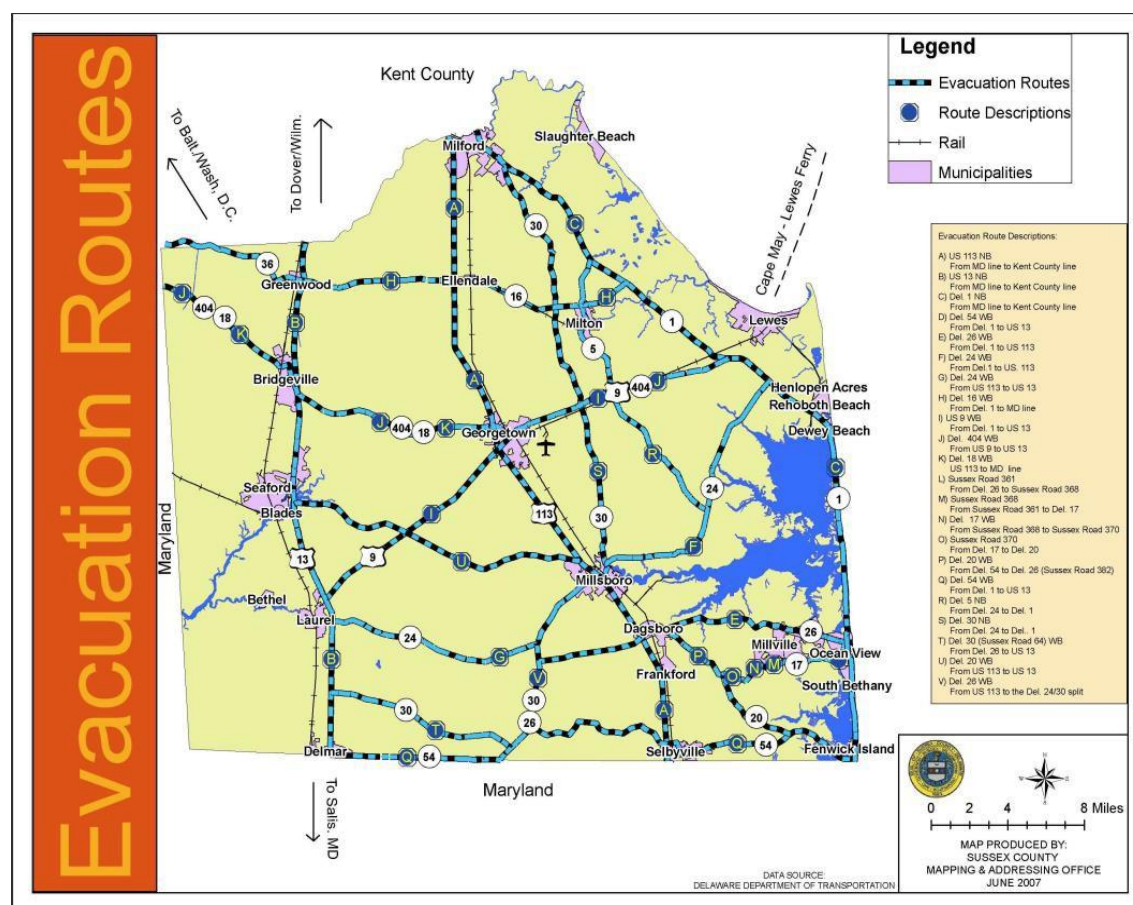
Website: DEMA.Delaware.gov

Having to leave your home during a storm event can be scary. As mentioned earlier, the Town of Bethany Beach uses multiple platforms to inform our residents and visitors should an evacuation become necessary. In addition, should a mandatory evacuation be ordered, town officials will go door to door to make sure every resident/visitor is informed and aid those who are unable to evacuate themselves.

Evacuation Routes

Evacuation Routes are determined through the coordination of the Delaware Emergency Management Agency (DEMA) and the Delaware Department of Transportation (DelDOT). Below is a link to the established evacuation routes for Sussex County:

https://sussexcountynj.gov/sites/default/files/PDFs/evac_roads_MAP.pdf



Shelters

During an evacuation in Delaware, residents can find emergency shelters through various resources. The Delaware Emergency Management Agency (DEMA) coordinates and activates shelters across the state, ensuring that residents have safe places to stay during emergencies. The American Red Cross manages emergency shelters and provides disaster relief services, including house fire support. Additionally, the Delaware Department of Health and Social Services (DHSS) offers social service resources related to public health, aging, homelessness, animal welfare, and mental health support.

Once shelters have been identified by DEMA, the Town of Bethany Beach will share that list with the community through all available platforms.

Seniors & Special Needs

The Town of Bethany Beach recognizes that our seniors and special needs populations are vulnerable during an evacuation and will require special assistance.

The Town has a **Special Needs Registration Form** that provides your name, address, and other important information for those assisting with an evacuation. Call the Bethany Beach Police Department, ATTN: Deputy Chief Justin Norman, to request the form.

The Town's website provides additional information at:

<https://www.townofbethanybeach.com/72/Seniors-and-the-Disabled>

South Coastal Village Volunteers Website: southcoastalvillagevolunteers.org



South Coastal Village Volunteers brings together neighbors helping neighbors in a community of support. As we grow older, we can age in place and continue to live independently in our homes and communities. SCVV coordinates volunteers to assist members with services such as transportation to various appointments and shopping, home visits, telephone check-ins, running errands, technology support and small household tasks.

Additional Resources

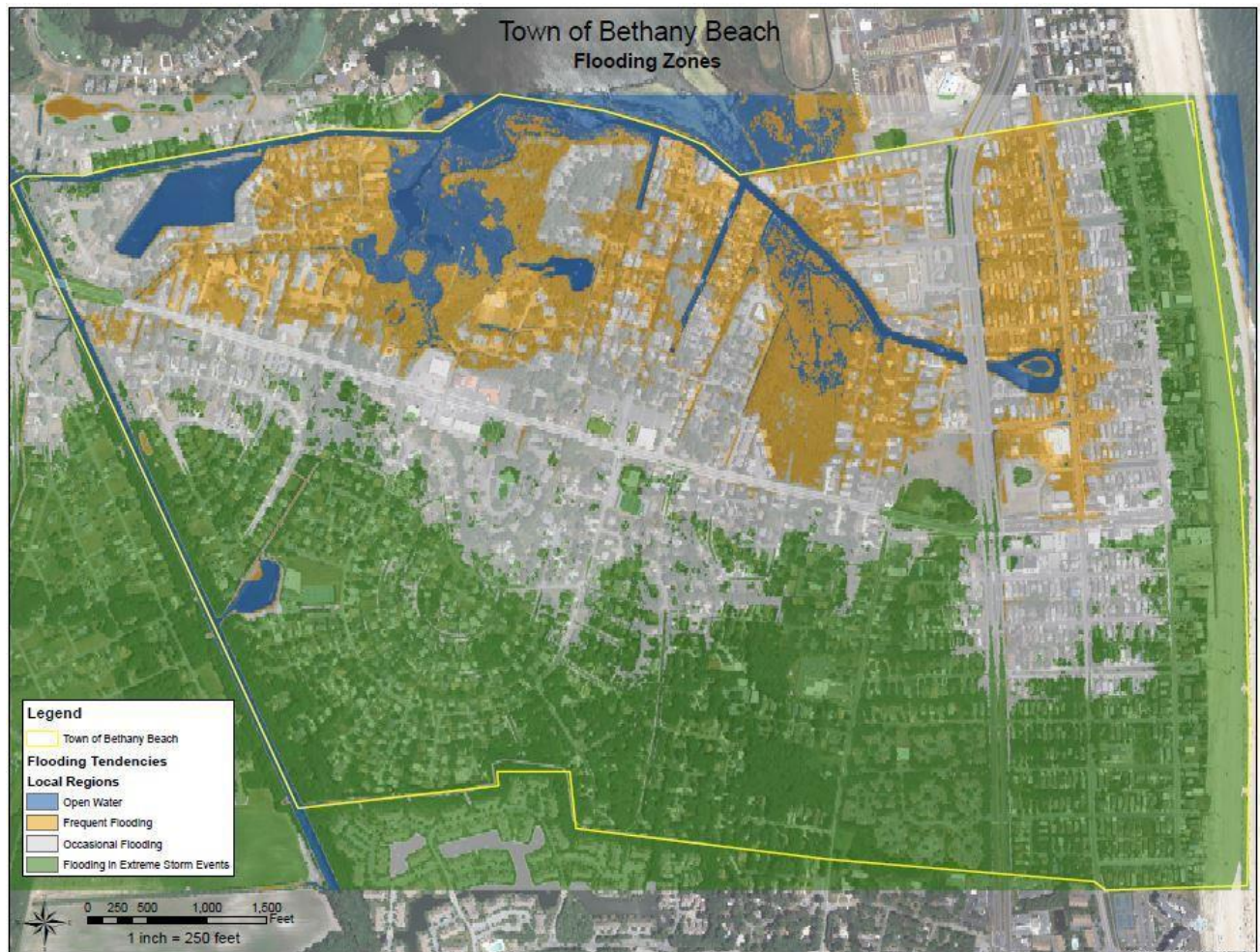
National Oceanic & Atmospheric Administration: noaa.gov/hurricane-prep

NOAA Hurricane Tracker: nhc.noaa.gov

U.S. Department of Homeland Security: ready.gov/hurricanes

National Weather Service: weather.gov/safety/hurricane-plan

DEMA Hurricane Information: preparedede.org/emergency-types/natural-hazards/#hurricanes



The time to prepare is now!

